

BROCKWELL LIDO WALL

Knitted square using stranded work and slipped stitch

Pat Gordon-Smith



Materials

- Rowan Felted Tweed, shades Barn Red (196), Carbon (159), Rose Quartz (206) & Peach (212)
- Rowan Cotton Glacé, shade Oyster (730)
- 1 pair 2.75mm knitting needles

Tension

29 stitches & 32 rows = 10 cm (blocked and pressed)

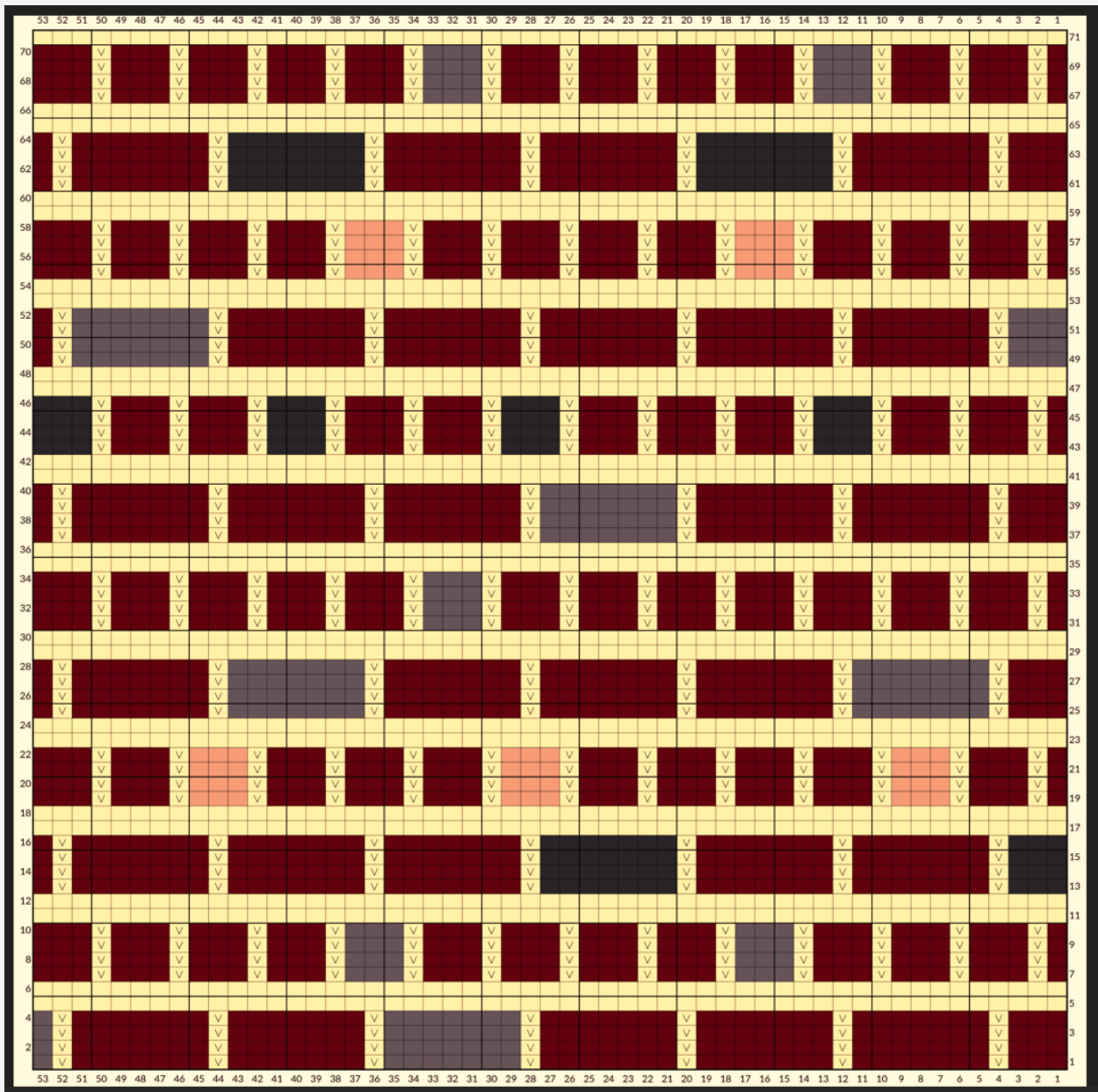
Instructions

Cast on 53 stitches using Oyster

Next row purl to end

Rows 1-71 Follow chart on p.2. My apologies for the very small row and stitch numbers on the chart. Each mortar stripe is 2 rows deep, each coloured block is 4 rows, the small coloured blocks are 3 stitches wide and the large ones are 7 stitches wide

With WS facing, cast off stitches purlwise



© Pat Gordon-Smith. Chart using ChartMinder: <https://www.chart-minder.com/>

	Oyster
	Barn Red
	Rose Quartz
	Shadow
	Peach
	K on RS, P on WS
	Slip purlwise